



LUXURY GARDEN APARTMENTS

Dunmore / Scranton, PA

Feel at Home with Country Living and City Convenience.

It's time for a move to our beautiful neighborhood near scenic Lake Scranton, where we offer you the peace and quiet of country living. Our remarkable location, only minutes from the revived Downtown Scranton area, is a great advantage to you; you get to enjoy city conveniences just minutes away including supermarkets, shopping malls, drug stores, houses of worship, restaurants, hospitals, schools, colleges, and entertainment. We are also less than 15 minutes away from the Scranton/Wilkes-Barre International Airport and the Route 6 Business and Shopping District.

We invite you to come and tour our lovely apartment community!

CALL NOW FOR AN APPOINTMENT

(570) 346-7571 • (570) 963-0724

105 Skytop Manor • Dunmore, PA 18505

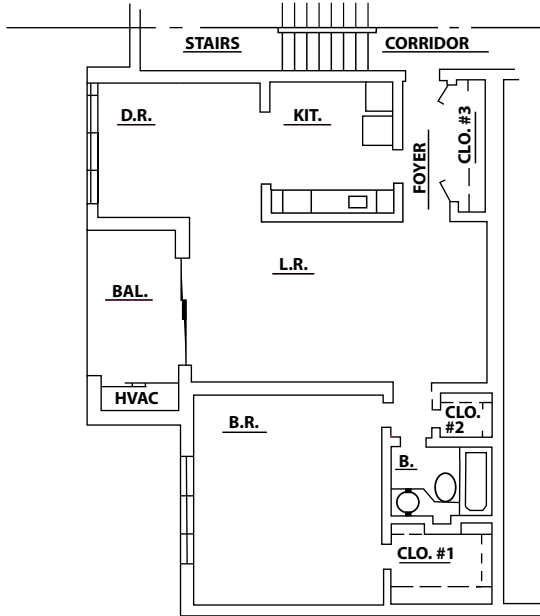
www.summitbythelake.com

M-F 9 AM-5 PM • Sat 10 AM-4 PM

DELUXE - 1 Bedroom

UNIT 202

Unit Net Area	850 s.f.
HVAC Space	15 s.f.
Balcony / Patio	69 s.f.
	<hr/>
	934 s.f.

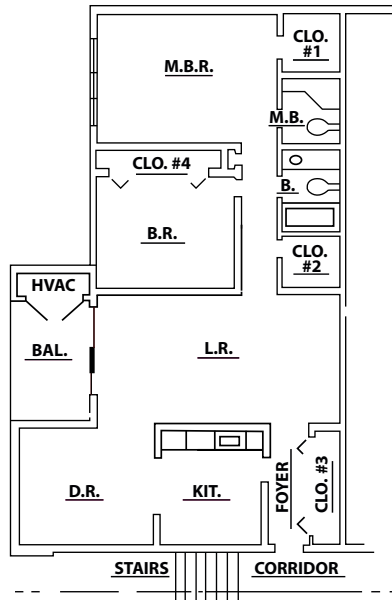


- Foyer
3'-6" x 10'-0"
- Kitchen (KIT.)
9'-0" x 10'-0"
- Dining Room (D.R.)
12'-0" x 10'-6"
- Living Room (L.R.)
21'-0" x 12'-0"
- Bedroom (B.R.)
12'-10" x 14'-10"
- Bath (B.)
7'-7" x 5'-0"
- Closet #1 (CLO. #1)
7'-6" x 6'-0"
- Closet #2 (CLO. #2)
4'-0" x 3'-0"
- Closet #3 (CLO. #3)
2'-0" x 10'-0"
- HVAC Space
2'-0" x 6'-0"
- Balcony (BAL.)
6'-6" x 10'-8"

**DELUXE - 2 Bedrooms /
2 Bathrooms**

UNIT 101

Unit Net Area	1,045 s.f.
HVAC Space	15 s.f.
Balcony / Patio	69 s.f.
	<hr/>
	1,129 s.f.



- Foyer
3'-6" x 10'-0"
- Kitchen (KIT.)
9'-0" x 10'-0"
- Dining Room (D.R.)
12'-0" x 10'-6"
- Living Room (L.R.)
21'-0" x 12'-0"
- Bedroom (B.R.)
12'-0" x 10'-6"
- Master Bedroom (M.B.R.)
15'-10" x 12'-0"
- Master Bath (M.B.)
5'-0" x 6'-0"
- Bath (B.)
5'-0" x 7'-6"
- Closet #1 (CLO. #1)
5'-0" x 5'-6"
- Closet #2 (CLO. #2)
5'-0" x 5'-0"
- Closet #3 (CLO. #3)
2'-0" x 10'-0"
- Closet #4 (CLO. #4)
2'-0" x 10'-0"
- HVAC Space
2'-6" x 6'-0"
- Balcony (BAL.)
6'-6" x 10'-8"



Get More than a Place to Hang Your Hat.

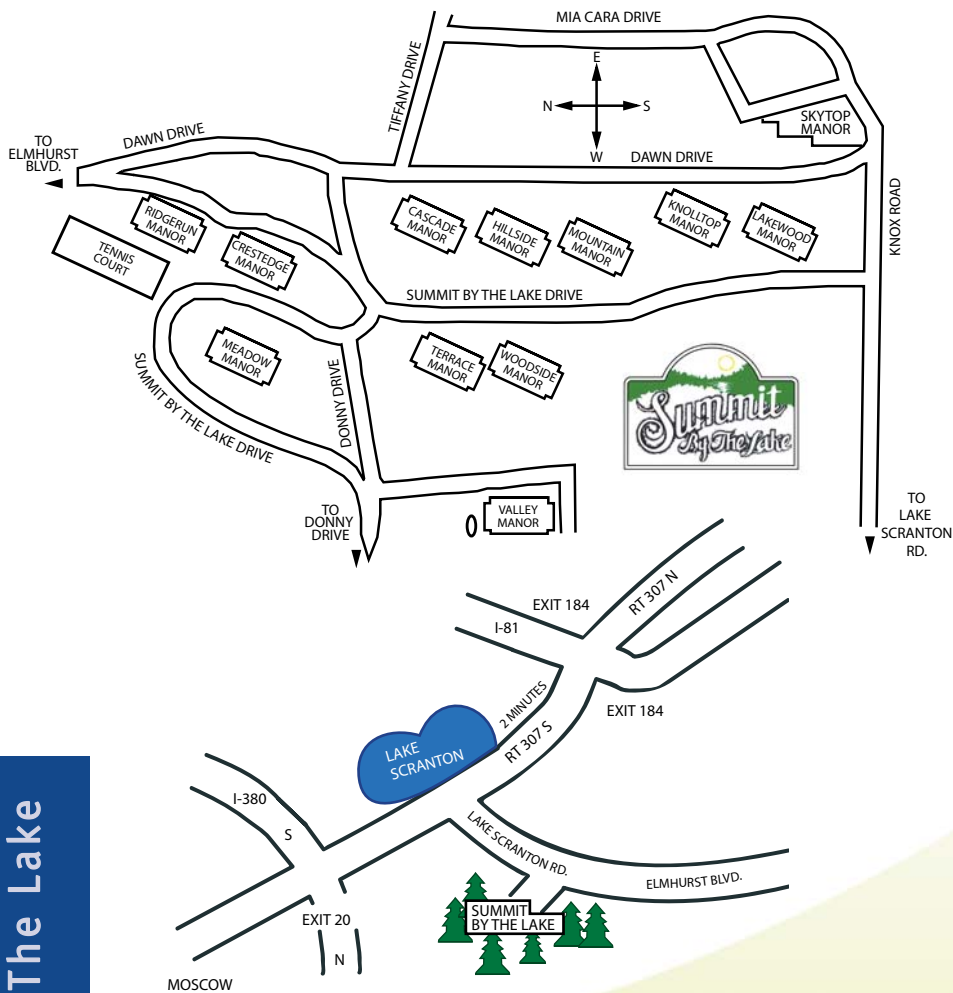
- Contemporary, spacious apartments
- Lots of closet space
- Range, refrigerator, dishwasher and garbage disposal
- Individual hot water heaters
- Individual heating systems
- Air conditioning
- Wall-to-wall carpeting
- Private terrace or balcony
- Reserved parking
- Convenient laundry facilities
- Tennis court
- Innovative management with a commitment to serving your needs
- 24-Hour maintenance

FREE

Gas Heat
Gas Cooking
Gas Hot Water
(In Most Apartments)

Key Features

Directions to Summit By The Lake



From I-81 North:

- 1) Left off Exit 184
- 2) Left onto Lake Scranton Road
- 3) Right onto Knox Road
- 4) Drive to Skytop Manor

From I-81 South:

- 1) Left off Exit 184
- 2) First Right Turn onto Meadow Avenue
- 3) At Traffic Light, Right onto Route 307
- 4) Left onto Lake Scranton Road
- 5) Right onto Knox Road
- 6) Drive to Skytop Manor